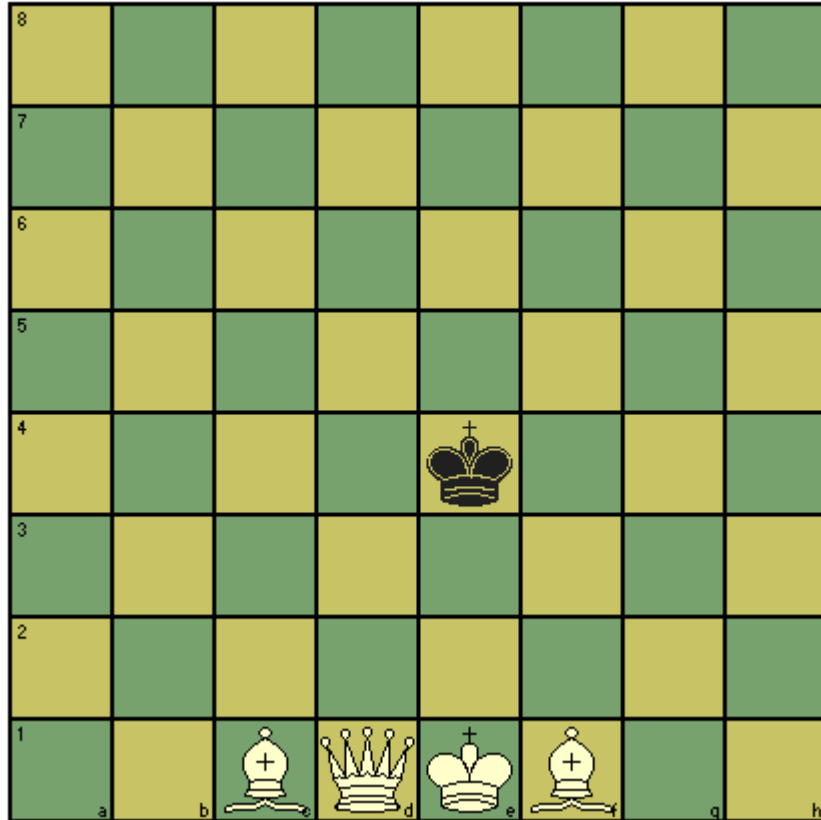


CHES T' MINIT puzzle – October 2017

This month's puzzle is difficult (unless you are a computer). White to checkmate in 3 moves – surprisingly there is only one solution. The problem (set by GM Pal Benko) is interesting as Bobby Fischer was unable to solve it in half an hour.



Solution: 1. Bc4 Ke5 2. Qd5+ Kf6 3. Qg5# – or 1...Kf5 2. Qh5+ Ke4 (2...Kf6 3. Qg5#) 3. Qd5#.