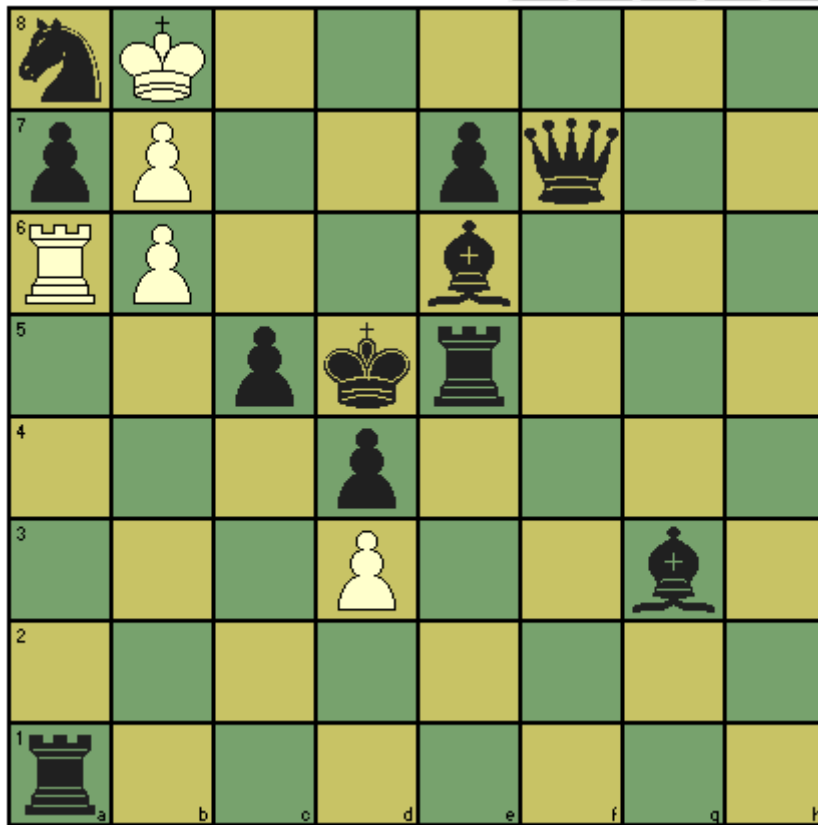


## CHESS T' MINIT puzzle – November 2016

This problem comes from GM David Smerdon's chess (and not-chess) blog. <http://www.davidsmerdon.com/> . White to play and draw, making what could be the most uncommon move in chess.



Solution: 1. bxa8=B+ . ( 1 bxa8=Q?? is no good, as White now has the extra possibility of Qxa7, which cuts out the stalemate ) . Kd6. 2. b7+ Kd7 (other moves are stalemate) 3. Rd6+ Ke8 4. Rd8+ Kxd8 stalemate.