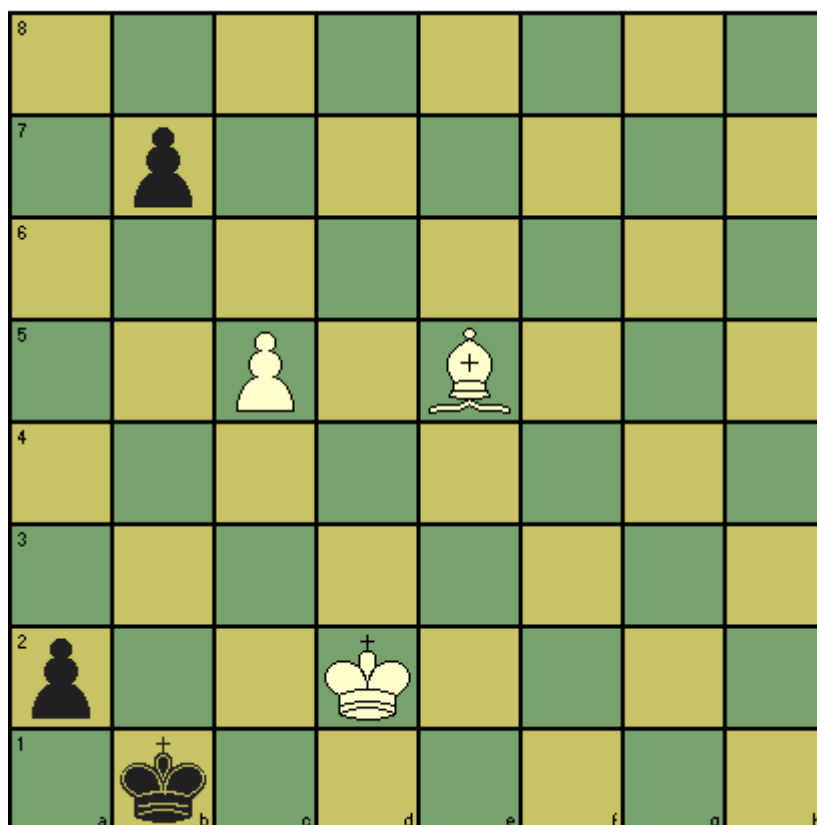


## CHESS T' MINIT puzzle – May 2016

This position was part of a study by the chess composer Stamma in the 18<sup>th</sup> century. White is to play and win. Note that if white allows the black pawn at a2 to queen, the position is a draw as white doesn't have time to capture black's remaining pawn without losing her own one.



Is there a way to win?

Yes, but care is required. 1. Ba1 Kxa1 2. Kc2 wins (after b5 3. c6(!) b4 4. c7 b3+ 5. Kxb3 Kb1 6. c8=Q a1=Q 7. Qc2 #). Note though that 2. Kc1 only draws.