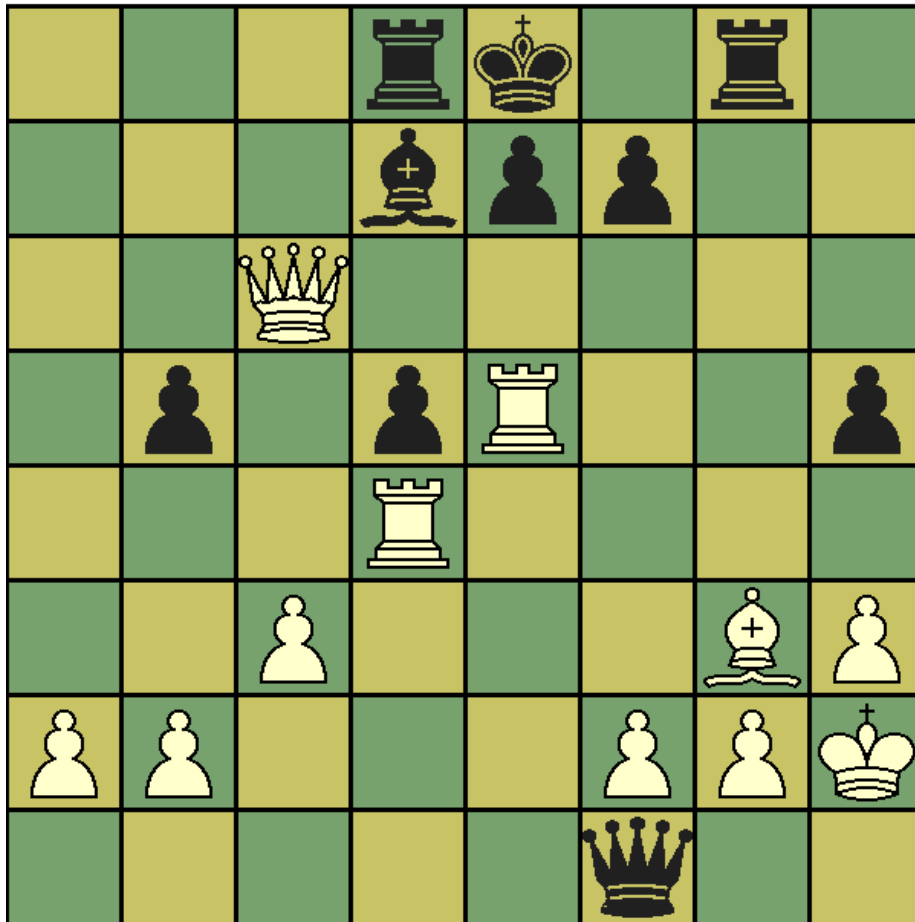


CHESS T' MINIT puzzle – October 2015

White has a winning position here and moves such as 1. Qxd5 should lead to an easy win. However, in an effort to completely tie black up, 1. Rxd5 was played. How can black turn the tables and win?



Solution. 1. .. Qxg2 2. Kxg2 Bxc6 and with the white rook pinned, checkmate on d8 is impossible and a lot of material will be lost.