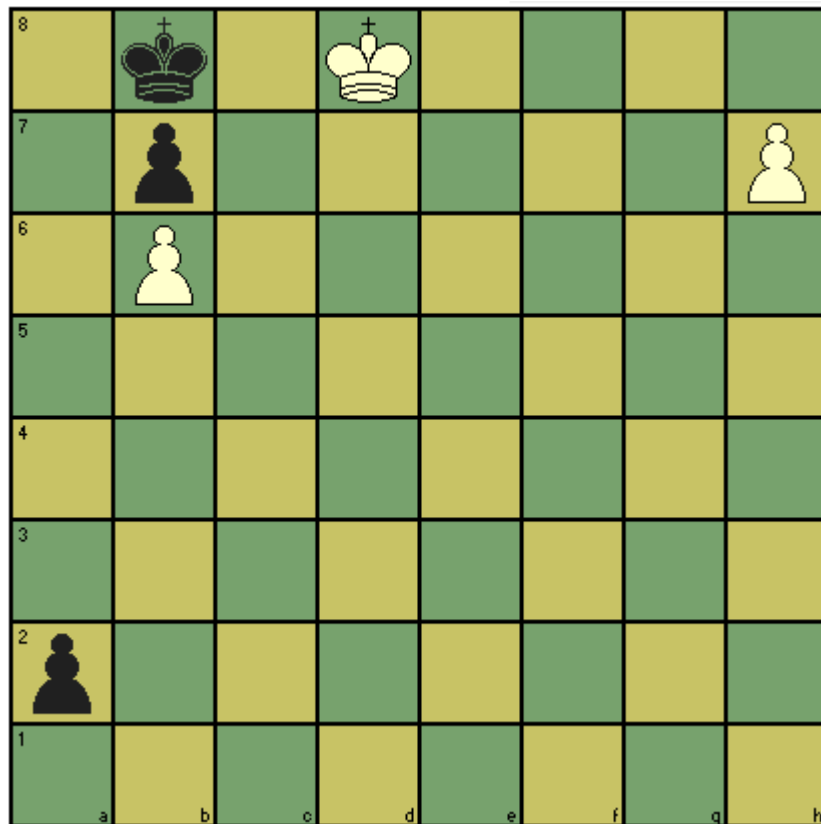


## CHESST' MINIT puzzle – May 2015

This month's puzzle is a charming study by Joseph (1922). White to win – the first move is obvious, the follow up is definitely not.



Solution. 1 h8=Q threatens mate by e.g. Kd7 but 1...a1=Q and if 2 Qxa1 stalemate, so 2 Qg8, Qa2!; 3 Qe8, Qa4; 4 Qe5+, Ka8; 5 Qh8 and wins - triangulation by the Q(!) to get the bK onto a8.