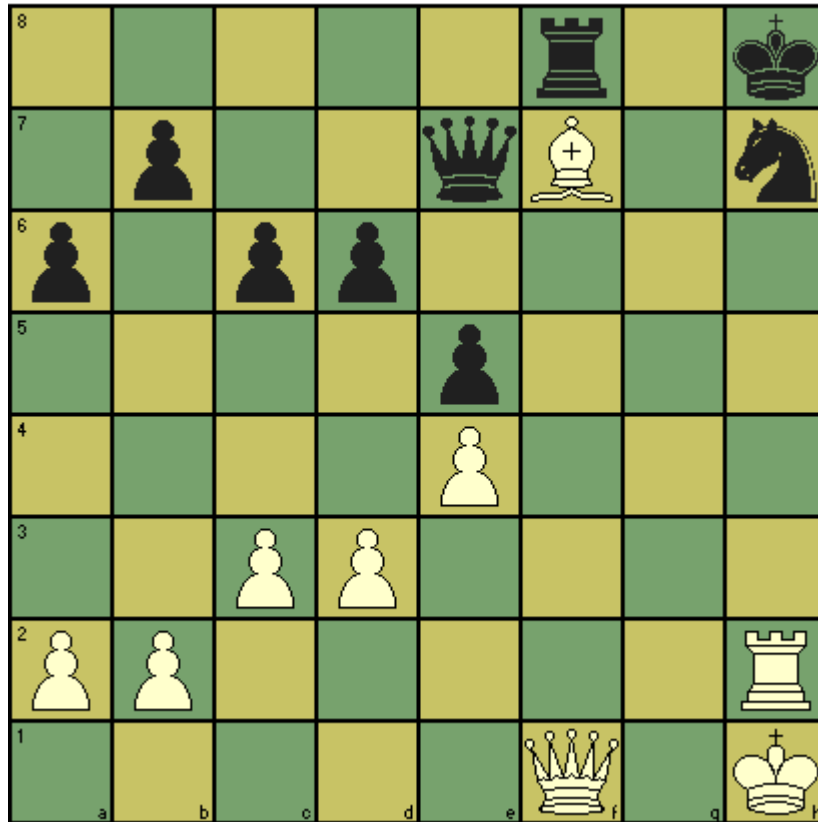


## CHESST' MINIT puzzle – June 2014

This month's puzzle comes from Fred Reinfield's classic, "1001 Brilliant Ways to Checkmate". White to play and checkmate in 4 moves.



Solution 1. Rxh7+ Kxh7 2. Qf5+ Kg7 3. Qg6+ Kh8 4. Qh6