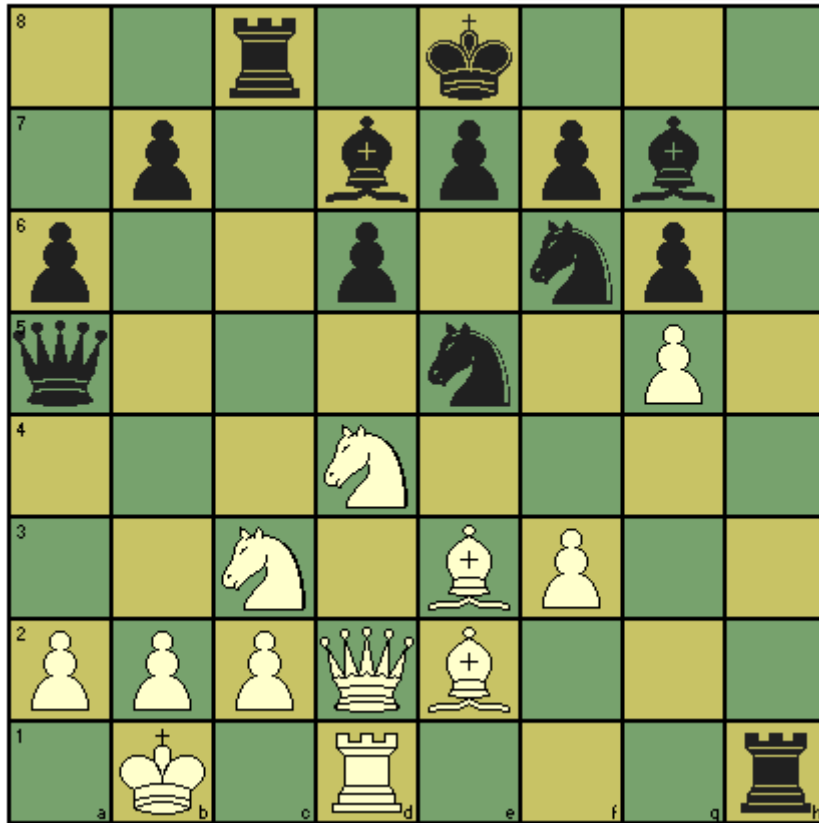


## CHESST' MINIT puzzle – April 2014

This month's puzzle comes from a simultaneous game played by world champion Tal against an unknown opponent in 1958. The move was ranked 110 in the most fantastic moves of all time in Tim Krabbe's excellent chess curiosities website (the other 109 moves are worth investigating) . White (Tal) to play and win.



Solution 1. gxf6 Rxd1 2. Nxd1 Qxd2 3. fxg7 and avoiding checkmate comes at a great material cost