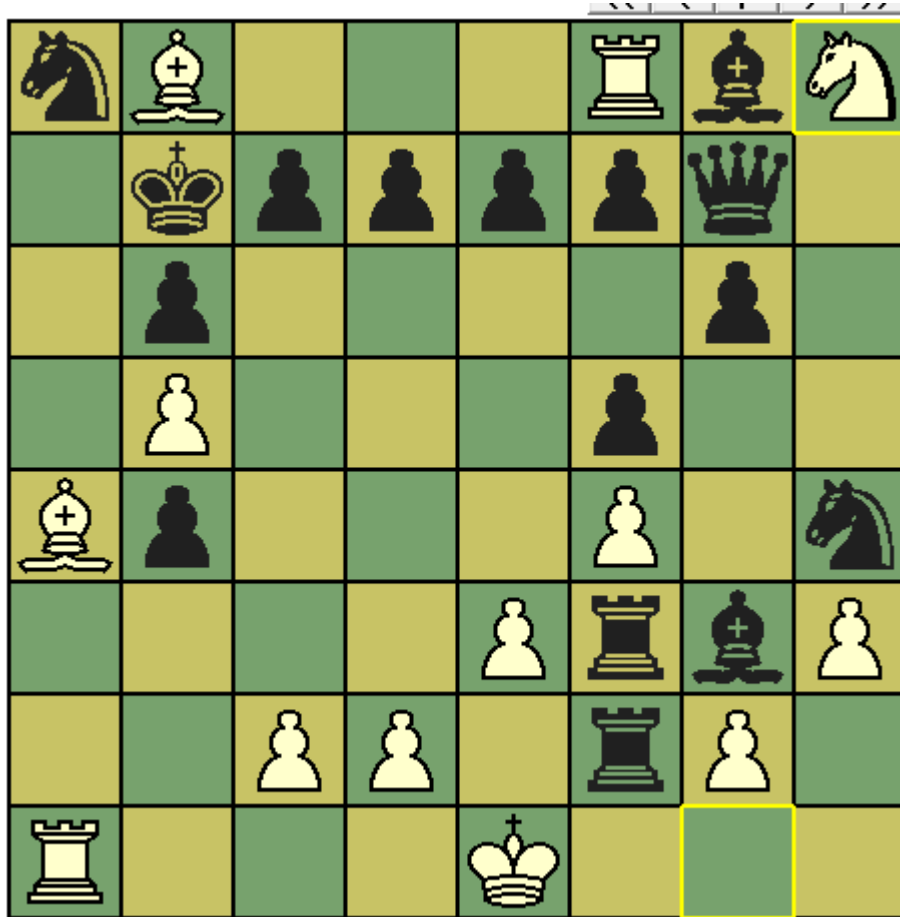


## CHESST' MINIT puzzle – February 2014

This month's puzzle is a beautiful example of retrograde analysis. Assuming that the position comes from a game of chess, with white to move, is queenside castling possible? For a bonus, what is the result with best play from both sides?



Solution:

Sadly the puzzle question was poorly posed, and should have been, "White is able to move and force a draw - what was the move, and why?".

In this case the move is 0-0-0, as if white is still able to castle, then it must have been more than 50 moves since the last pawn move or capture.

Details on this beautiful puzzle (but, sadly, no descriptions of its creator) can be found at

[http://www.ocf.berkeley.edu/~wwu/cgi-bin/yabb/YaBB.cgi?board=riddles\\_hard;action=display;num=1062446970;start=0](http://www.ocf.berkeley.edu/~wwu/cgi-bin/yabb/YaBB.cgi?board=riddles_hard;action=display;num=1062446970;start=0)