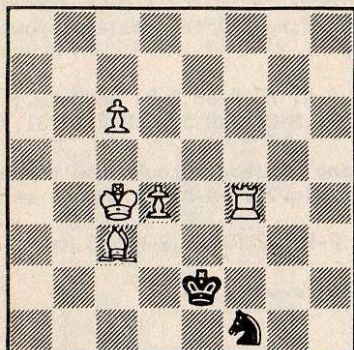


# PROBLEM CORNER

A HAPPY CHRISTMAS & GOOD SOLVING IN

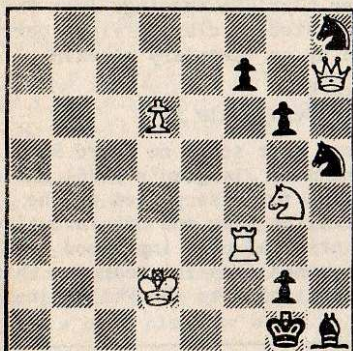
All solutions, letters to Bob Meadley 41/5th Avenue Narromine 2821.

Brian Tomson/Robert Shearer 2/10/81



Series Helpmate in fifteen (5x2)  
Black plays 15 moves straight and  
White mates in 1.

Geoff Foster, Deakin ACT 3/7/81



White mates in two moves (5x7)

- (a) Diagram
  - (b) Remove WPd6, put WK on d6 (4x7)
  - (c) Add WPd2, put WK on f8 (5x7)
- Three prizes to 3 neatest correct solution to both problems

### Computer solutions.

Jens Kieffer-Olsen of PO Box 177 Narrabeen 2101 has developed a program which solves 1-ers to 9-ers and which cost him \$500. He offers solutions to 2-ers for \$4 or 3 for

\$10 and will quote a price for more movers. Invaluable for composers who wish their work checked for etc before entering it in a tourney. Jens feels he can develop a program for self-mates & helpmates and all interested please contact him. Last month's problem (1.Kg4..any 2.Qh2!) was solved by P.C.fans in times up to an hour. Peter Parr set the position up on one of his comp and it took 45 seconds!!

George Meldrum sent me the International Computer Chess Association Newsletter for May in which is a game between Hans Berliner and Belle the World Computer Champ. An amazing affair which Hans won but on current performance Belle is rated at 2384 would undoubtedly be World's Problem Solving Champion if there was such an event. Jens sent me the Computer solution to Kosh's 8th November Sun-Herald problem by K.A.K.Larsen. The printout was nearly 5' long and had all the moves in all variations as well as tries!

Prizewinners: Dr Vasil Tulevski, P. Bronson, C. Farnot.

Prizes will be Gerard Mahoney's 'Eye of the Spud' for the next ten solvers. Those who miss out getting one from me can buy one from him for \$5 post free (See p.218 Sep CIA). It's a top book with a couple of chess references as well.

The Get-together on 3rd October saw Bernie J, Dennis Hale, Jim Jones, George Meldrum, John van Der Klauw, Nigel Nettheim, and myself in the revamped Phoenician Club near Gran Bros. Ian Rogers was there for a short while and was presented with prize in the solving tourney. Subjects discussed were favourite problems, computer chess, chess behind the Iron curtain, but the highlight was a brilliant retro by JVDK which May be able to show in a future column.

DEADLINE FOR JANUARY ISSUE - MONDAY JANUARY 4

# NATIONAL RATINGS

This rating list is based on results received up to December 1981. As usual, 'M' indicates a reliable rating, '?' a somewhat unreliable one and '??' one which only a vague indication at best. Ratings less reliable than '??' have not been published and such players should be regarded as unlisted.

Incidentally, the indications are not based simply on number of games played but on a number of other factors.

If your rating does not seem to be correct there are a number of possibilities:-

- (i) Not all of your results were submitted. Check the list of tournaments rated.
- (ii) Some of your results were wrongly credited to someone else (or vice-versa). If you think this might have happened, check with your State Ratings Officer or me.
- (iii) Inertia - ratings do not respond instantly to sudden changes. A good result after many years of plodding, for example, must be confirmed by subsequent results to ensure that it is not just a flash in the pan.
- (iv) You aren't as good as you thought you are! (We all seem to think of our absolute best as our "average strength".)

Results are due to the State Ratings Officers for collating and coding results.

G.Saint, A.C.F Ratings Officer.

### THE UPPER CRUST

Tomson RM (Vic)	2300m	Fuller ML (NSW)	2205m	Kerr S (NSW)	2150m	Purdy JS (NSW)	2125m
Shearer R (V)	2285m	Vassilaropoulos N (SA)	2195m	Kellner JV (NSW)	2150m	Cowley RG (SA)	2125m
Shearer N (NSW)	2255m		2195m	Hay T (NSW)	2140	Ferris D (ACT)	2115m
Shearer M (V)	2240	Hamilton DG (Vic)	2170m	Travers R (NSW)	2140m	Wright AG (Vic)	2110?
Shearer A (NSW)	2220m	Curtis J (NSW)	2160m	Dozsa P (NSW)	2135	Partis M (WA)	2110m
Shearer D (V)	2220m	Hjorth G (Vic)	2155m	Zaric Srbo (SA)	2130m	Smith MD (Vic)	2105m
Shearer I (NSW)	2205m	West G (Vic)	2155m	Brown P (NSW)	2125m	Parr P (NSW)	2100m

### AUSTRALIAN CAPITAL TERRITORY

Results submitted by A.C.T.

Canberra Cup 1981 :: Canberra Cup :: Woden Club Championship  
 Canberra Chess Club Championship :: Winter Tournament :: Canberra Chess Club Championship

Shearer A	1560	Farrell R	2030m	Kreznovic M	1585??	Runciman A	1255
Shearer R	1475?	Ferris D	2115m	Lamberts G	1585m	Shann S	1360
Shearer P	1560?	Foulkes M	1580??	Mackie JJ	1670m	Solomon A	1750m
Shearer B	1710m	Gmizic B	1805m	Mann A	1530	Sostaric M	1550??
Shearer D	1620?	Grassi G	1205	Marks D	1100	Stern G	1560m
Shearer C	1720m	Grcic M	1765m	Marks J	1585	Stojanovic V	1400
Shearer A	1315?	Grinvalds Mrs L	975	Meyer R	1710m	Thomas M	1375
Shearer P	1430?	Hetherington G Mrs	1135	Milberg S	1605??	Thomas W	1890??
Shearer P	1580m	Hetherington R	1485m	Nemeth T	1440	Vermeer J	1825??
Shearer E	1965m	Hurst J	1785m	O'Brien M	1215??	Webber M	1495m
Shearer D	1360??	Jarvis B	1465??	Petersons H	1560		
Shearer I	1780m	Jessop DA	1495	Pieroni E	1370?		
Shearer W	1670m	Kempen L	1995m	Robertson A	1700m		
Shearer W	1665??	Korda AC	1820m	Rout I	1805??		

### NEW SOUTH WALES

Results submitted for New South Wales:

Big Clubs Championship 1980 :: Big Clubs Championship 1981  
 Open Spring Tournament 1980 :: Chatswood Club Championships 1981  
 Phoenician Open 1980 :: Dunhill Congress  
 Sydney Championships 1981 :: NSW State Championships  
 Sydney Championships :: St. George Swiss 1981  
 Matches 1981 ::  
 1981 ::

Shearer J	1725	Amberson C	1375m	Backhouse J	1125m	Basic M	1625m
Shearer D	1440	Anderson L	1395	Bagnall P	1290m	Bazak F	1770
Shearer E	1925m	Ansky N	1710	Baikovas G	1440m	Beesley M	1320
Shearer S	1225?	Art K	1485m	Baker M	1415	Bell D	1770m
Shearer R	1115??	Arthur R	1280m	Balazevic Z	1705m	Benedek L	1480m
Shearer D	1095?	Augustinas V	1515	Barasoain F	1110?	Bennett JA	1420
Shearer BC	1745m	Baay E H	1435	Basden R	1180??	Benson C	1235

Ratings supplement - Chess in Australia - December 1981

Table with columns for name, rating, and player information for New South Wales (continued), listing players like Dixon D L, Hicks A, Highman A, etc.

Table with columns for name, rating, and player information for New South Wales (continued), listing players like Smith RS, Sneideris V, Spicer M, etc., and ending with a list of chess events.





Events submitted by Western Australia

WA State Reserves A,B and C	::	Metro Club Championship Div A and Div B groups 1 & 2
State Championship & Reserves	::	Harris Teams Trophy
QE2 Club Championship 1981	::	City of Fremantle
Willeton Open	::	Fremantle Club Championship '81 & Fremantle Open 1981

Adams W	1405	Derham Dr.SP	1575	Jones L	1805?	Segers H	1530
Ainslie F	1250?	DiRenzo R	1900?	Kateiva GA	1445	Sibum J	1300
Anderson G	1805m	Dix P	1610	Kershaw R	1175??	Silver A	1500
Anton JS	1635m	Dixon L	1615	Kinsman C	1905	Slavic J	1900
Aquilina D	1310	Dockery M	1495	Kleyweg R	1480	Smyth VA	1610
Aquilina J	1705m	Duncan M	1290??	Kos F	1735m	Solar MJ	1490
Baillie R	1425m	Ellis D	1940m	Lav C	1250??	Soto-Olivo G	1210
Ballantyne W	1985m	Engelhardt L	2025m	Lesnewsky L	1395	Soto-Olivo J	1630
Bell GM	1810m	Ermacora I	1660m	Lilly R	1965m	Steinbock J	1730
Bell P	1460??	Pardoe A	1495m	Lockwood TJ	1715m	Steinneke K	1660
Bell T	1335	Faulds R	1275m	Lubtschenko W	1645m	Stenhouse A	1720
Blackmore K	1430	Fletcher JE	1810m	Mak S	1680?	Stewart L	1080
Boudville W	1690m	Flint M	870??	Markou V	1545m	Storey J	1870
Brouwer F	1570m	Fossilo G	1055?	Masters JC	1525	Szente L	1100
Bryson J	1410m	Gee K	1390??	McLean D	1715m	Teuchert R	1230
Burford JH	1530m	Gillett M	1545	McNish C	1245?	Thomson M	1670
Burnett A	1345	Gliddon AH	935?	Mehan L	1585	Van Gent J	1610
Butcher J	1660m	Grandage J	1150??	Metcalf K	1435?	Vasser A	1700
Butcher R	1995m	Grinfelds Z	1890m	Monson R	1390	Watt D	1670
Byrne SJ	2095m	Gunn D	1390	Muntz M	1355?	Webster Dr SG	1910
Chalupa P	1630??	Halperin M	1585m	Narustrang V	1475	Williams D	1470
Charnock DM	1700	Hannah D	1210	Partis M	2110m	Willcock J	1770
Chart EM	1410	Harry B	1460m	Pilgrim RE	1800m	Woodhill S	1470
Clay P	1735??	Hayward HT	1450?	Pirie W	1480m	Wright R	1670
Conway JM	1620m	Hogan-Esch F	1295	Ravestain H	1635	Yarwood I	1320
Cooper R	1980m	Hruby P	1670m	Regan A	1750	Zadnik M	1540
Curtis M	1730m	Huizenga HLM	1695	Robson F	1440?	Zylstra P	1480
Dare G	1420m	Ischenko W	1700m	Sampson I	1805m		
De Heer A	1515?	Johnstone Dr.JR	1840m				

TASMANIA

Events submitted by Tasmania

City of Hobart Championships 1980 and 1981	(Part only)
Tasmanian Open Championships 1980	:: Launceston Weekend Tournament 1981
Northern League Match 1981	:: Launceston Summer Tournament 1981
Southern Interclub 1981	:: Hobart Club Championships 1981
Hobart Weekend tournament 1981	:: Burnie Club Championship & playoff 1981
Northern League Match 1980	:: Burnie Club Fixed Opening Tournament 1981
Emu Bay Weekend tournament 1981	:: North v South match 1981
Tasmanian Championships 1981	:: Otto Weber Memorial Tournament (part only)
Tasmanian Junior Championships 1981	:: Sandy Bay Weekender & Club Championship 1981

Atkinson LB	1320	Henri SJ	1905	McDonald A	1130	ShadboT T	1170
Atkinson RD	1780	Hills RJB	1730m	Midson M	1465m	Skabo E	1700
Benson M.D	1395m	Holmes LB	1600	Muller G	1495??	Steinis Dr EE	1690
Bloom N Mrs	1165	Howell RA	1645	Murphy Miss EH	1100	Smith E	1730
Browne S	1585m	Inglis Miss B	1170m	Neville R	1265?	Spooner J	1300
Butler A	1360?	Jones BV	1585m	O'Halloran S	1345m	Swift SC	1700
Chalk J	1170?	Kacic T	1605m	Palmer D	1525	Wagg P	1700
Coates R	1140	Keefer LC	1450m	Phillips Dr F	1595m	Walker JHN	1300
Ely Dr.R	1870?	Kennedy J	1450	Polya J	1575m	Weish J	1610
Flitney A	1740m	Kershaw M	1340??	Rand M	1545m	Wilkins JK	1510
Foong D	1470	Ketelaar A	1505m	Roberts M	1295	Williams D	1670
Goldschmeid F	1760	Ledger RN	1580m	Roebuck D	1580m	Worsley M	1300
Hansen FW	1600m	Lewis N	965	Rolls W	1370?		
Harvey R McA	1590m	Lubrich G	1215	Scotph D	1205?		
Harvey S	1195m	Markovic R	1645	Scott J	1580m		

MOST ACTIVE PLAYERS (showing (a) number of games and (b) Score)

Prenter D SA	133	75.0	Foster B SA	85	52.5	Reitmans Q NSW	80	48.5
Benham C "	108	49.5	Pengelly SA	85	50.5	Teters A Vic	77	46.5
Hornung K "	93	49.0	Hills RJB Tas	85	62.0	Wilkinson L Qld	75	40.5
Powell V "	90	44.0	Martin A SA	84	44.0	Hislop J SA	74	44.0
Corner M "	89	48.5	Ballard P SA	83	50.5	Reeve A SA	74	31.0
Djelaj P "	88	47.0	Zaric S Jr SA	83	57.0	Oldham C Qld	72	51.0
Slavotinek A "	86	51.0	Ward A SA	82	56.0			

# CHESS WORLD

3rd Floor, 381 Pitt St., SYDNEY (cnr.Pitt & Liverpool Sts.)

TELEPHONE: 264-8582

**BEST GAMES OF CHESS 1929 - 76** - Arnold M. Denker, Paperback 208 pages. Arnold Denker is more than a figure hunched over a chess board. He has a unique perspective on chess that includes a fine sense of humour." Includes games against Botvinnik, Kashdan, Reshevsky, Steiner, Horowitz, Fine and Fischer. \$6.30 plus pack & post \$1.00 N.S.W. \$1.10 Interstate.

**CHESS OPENING FOR YOU** - Larry Evans. paperback. 158 pages. A complete system for White and Black. A method of choosing the opening that best suits the style of the individual player. Evans suggests a flexible system one for White and two for Black (against 1.P-K4 and 1.P-Q4) - allows both players to conduct an intelligent opening against anyone, and has the added virtue of avoiding excessive study and memorization. \$8.95 plus pack & post, \$1.00 NSW; \$1.10 Interstate.

**IDEAS BEHIND THE CHESS OPENINGS**: Rueben Fine. paperback 240 pages. If you want to avoid mere drift or imitation in playing your opening moves, this is the book for you. Without memorising any series of moves or variations, you will be able to play strongly in the openings because you will know the objectives you are seeking and will have a complete understanding of this phase of the game. \$5.50 plus pack & post \$1.00 NSW \$1.10 Interstate.

**SYSTEM** - Aron Nimzovitch, paperback 372 pages. The system describes the theory of chess: it also describes the character and genius of its author. It is a very readable book, for Nimzovitch's methods sparkle with humour, pungent originality and with explanation. One of the most stimulating books ever written on chess." \$7.50 plus pack & post \$1.00 NSW; \$1.10 Interstate.

**CHESS FUNDAMENTALS** - Rueben Fine: paperback, 470 pages. It has been my purpose in this book to present a compact guide to the chess openings. I have attempted on the one hand to include everything that is important for current play and on the other to exclude material which is too specialised to be of any practical value." \$7.50 plus pack & post on 1 kilo.

**WOULD LIKE TO TAKE THIS OPPORTUNITY OF WISHING YOU ALL A PEACEFUL AND A HAPPY CHRISTMAS (the strikes notwithstanding).**

## Correspondence Chess

Whether you're mad keen to improve or just want to play for pleasure, correspondence chess has something for you.

All players are rated and matched against players of similar strength.

Join Australia's largest chess club. Over 1250 active members from masters to beginners belong to the Correspondence Chess League of Australia.

Write now for the "Green Book" to:-

C.C.L.A., BOX 2360, G.P.O. SYDNEY N.S.W. 2001