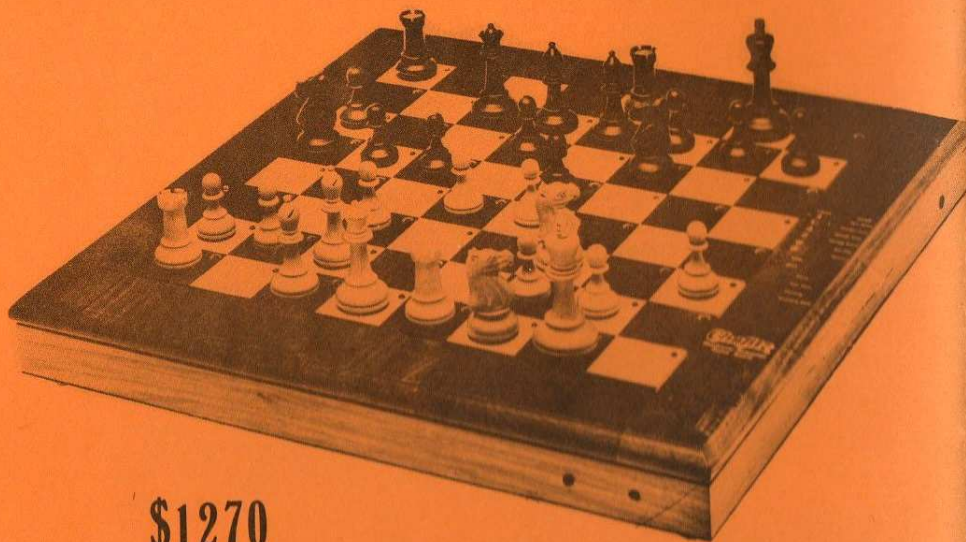


Auto-Response Board "GRAND MASTER"

THE WORLDS FIRST FULLY SENSITIZED CHESS BOARD



\$1270

Size 18" x 18" x 3"
12 months warranty.

This beautiful, full sized tournament board features the famous SARGON 2.5 programme and is fully auto-responsive. This means there is no keying required; you simply move your piece on the sensitized surface and SARGON will indicate where his next move is.

With its beautiful inlaid wood top and French carved chessmen this unique product will be a decorative (and instructive) addition to any room.

N.S.W.: BOX & DICE, Village Arcade, Neutral Bay. 90 1268
CHELSEA DISTRIBUTORS: 98 West Street, North Sydney. 920 5060
CHESS ENTERPRISES: 81 Pittwater Road, Manly. 977 2651

VIC.: JOHN ENGLANDER & CO. 390 Spencer Street,
Melbourne. 329 0144

COUNTRY: Write for mail order form and brochures to:
CHELSEA DISTRIBUTORS: 98 West Street, North Sydney 2060, or
phone: (02) 920 5060



CHESS IN AUSTRALIA



5 VOL 16 - MAY 1981 - PRICE 80c



EVELYN KOSHNITSKY B.E.M.

30...B-K2!

31.K-B2?.

31.R-B6!,K-K2 32.R-R6 would have drawn, Black having nothing better than 32...K-B2.

31...B-K2 32.R-B7!?

White had to do something about Black's threat to push his KR pawn but now Black can exploit his better Bishop and better pawn structure (passed pawn).

32...RxR 33.BxR,K-K3 34.K-Q3,K-B4 35.K-K3,K-N5! 36.B-N8,P-QR3 37.P-R4, P-KR4?!

37...B-B4ch! was most accurate as now White could prolong matters with 38.K-B2.

38.B-K5?!,B-B4ch 39.K-K2,P-R5 40.K-B1,P-R6 41.B-N8,K-B6 42.Resigns

If 42.P-B5,P-N4! and Black will soon Queen a pawn.

***** *By accurate play Black is still in the game. Here 22.Bel preserving the two Bishops is what I feared most.

BLACKPOOL OPEN 1981

White: R.McMichael Black: G.West 1.e4,Nc6 2.Nf3,e5 3.Bb5,a6 4.Ba4,Nf6 5.Qe2,b5 6.Bb3,d6 7.c3,Be7 8.d3

White has chosen a system which, although slow, proves also to be insidious.

8...0-0 9.Nbd2,Qd7!?

Not as weird as it looks. I intend Bb7,Rad8 and d5. The immediate d5 is also interesting.

10.Nf1,Re8 11.Ng3,h6

Possibly wrong but I didn't like White's Bg5 after my Bishop has gone back to f8.

12.Nf5,Bf8 13.g4!

The culmination of White's intelligent opening play and apparently crushing.

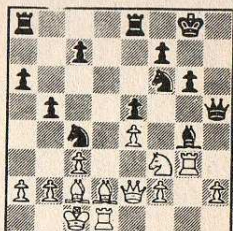
13...Na5 14.Bc2,g6!!

Weakening the Black squares and giving up my black squared Bishop simultaneously. Yet due to the peculiarities of the situation, it is best.

15.Nh6+,Bh6 16.Bh6,Qg4 17.Rg1

Not 17.0-0-0?,Qh5 and Bg4 winning.

17...Qh5 18.Bd2,d5! 19.0-0-0,de4 20.de4,Bg4 21.Rg3,Nc4



22.h3!?,Bf3 23.Qf3,Kg7!

Again the only move to maintain equilibrium.

24.Bg5,Qf3 25.Rf3,Nh7

Now to keep the two Bishops White must accept one of them being badly out of play.

26.Bh4,Nd6 27.Bb3!,F6 28.Rfd3,Ng5!

Accepting pawn weaknesses to get at White's weaknesses and to implement a "black square strategy".

29.Bg5,fg5 30.Bd5,Rac8!

Gaining a tempo, as a Rook on d8 would be irrelevant, whereas here c6 is a latent threat.

NATIONAL RATINGS

This rating list is based on results received up to APRIL,1981. As usual,'M' indicates reliable rating, '?' a somewhat unreliable one and '??' one which only a vague indication at best. Ratings less reliable than '??' have not been published and such players should be regarded as unrated.

Incidentally, the indications are not based simply on number of games played but on a number of factors.

If your rating does not seem to be correct there are a number of possibilities:-

- (i) Not all of your results were submitted. Check the list of tournaments rated.
(ii) Some of your results were wrongly credited to someone else (or vice-versa). If you think this might have happened, check with your State Rating Officer or me.
(iii) Inertia - ratings do not respond instantly to sudden changes. A good result after many years of plodding, for example, must be confirmed by subsequent results to ensure that it is not just a flash in the pan.
(iv) You aren't as good as you think you are! (We all seem to think of our absolute best as our "average strength")

Thanks are due to the State Ratings Officers for collating and coding results.

G. Saint
A.C.F. Ratings Officer

THE UPPER CRUST

Table with 6 columns: Name, Rating, Name, Rating, Name, Rating. Includes Jamieson R.M., Rogers (V), Johansen (V), Hamilton D G, Smith M D (V), Hjorth G (V), Partis M (WA), 2105m.

AUSTRALIAN CAPITAL TERRITORY

Events submitted by A.C.T.

Ackermann Trophy
Karl Schrimpt Tourney
Charity Cup

Table with 6 columns: Name, Rating, Name, Rating, Name, Rating. Includes Abraham A, Ackermann H, Alexander P, Alps J B, Arsanis I, Butler B, Campbell A, Clark P, Cordingly H, Douglas I, Egan W, Foote M, Grassi G, Grcic M, Grinvalds Mrs L, Hafner J, Henrick K, Hetherington G, Hetherington R, Lamberts G, Leslie D, Mackey P, Mackie J J, Marks D, Meyer R, Nemeth T, Nijssen P, Oram D, Roberts T, Roesler R, Runciman A, Shann S, Smyth G, Solomon A, Stern G, Thomas M, Van Scheepen F, Webber M, 1250?.

NEW SOUTH WALES

Table with 6 columns: Name, Rating, Name, Rating, Name, Rating. Includes Bell D, Broekhuysen P, Burdon P, Colquhoun R, Dickson I C, Halpin P, Harrison K J, Harvie J, Hill K J, Holland S, Ireland S, Jackson R, Kelly J, Korbe H, Luders W, Mack J, Mescher M, O'Donoghue M, Rantzen A, Reitmans Q, Saccardo F, Santavec, Schwaiger A, Simmons R, Szasz, Trott I, Viner P J, Voon R, Walshe I M, Wirth A, Woods S, 1285?.

VICTORIA

Events submitted by Victoria:

- VCA Minor Tournament '80 :: Waverley Qualifying Tournament 1980
VCA Heidelberg Club Champ.'80 :: Victorian Open Championship 1980
VCA Melbourne Club Chmp.'80 :: Box Hill Open 1980
VCA City of Melbourne Chmp.'80 :: Waverley Open 1980
VCA City of Melbourne Junior Chmp.'80 :: VCA City of Melbourne Novices 1980
Ballarat/Begonia Open 1981

Table with 6 columns: Name, Rating, Name, Rating, Name, Rating. Includes Anderson F, Armerman M, Atkins C, Baraba G, Baron H, Basta E A, Baynham J, Beggs D, Bellamy M, Bergamasco R, Bergmanis O, Belofastov George, 1335?.

VICTORIA (continued)

Table of chess players from Victoria with columns for name, rating, and other details.

QUEENSLAND

Events submitted by Queensland:

- List of chess events submitted by Queensland, including Brisbane Club Spring Round robin and Ipswich chess club Spring Shield Championship.

Table of chess players from Queensland with columns for name, rating, and other details.

QUEENSLAND (Contd)

Table of chess players from Queensland (continued) with columns for name, rating, and other details.

SOUTH AUSTRALIA

Events submitted by S.A.:

- Adelaide Australian Junior Championship 1981

Table of chess players from South Australia with columns for name, rating, and other details.

WESTERN AUSTRALIA

Events submitted by W.A.:

- List of chess events submitted by Western Australia, including Willetton Open 1980 and National Junior Girls Championship.

Table of chess players from Western Australia with columns for name, rating, and other details.

TASMANIA

- Hills R J B 1710m Williams D 1495

MOST ACTIVE PLAYERS

Table of most active players with columns for name, rating, and other details.