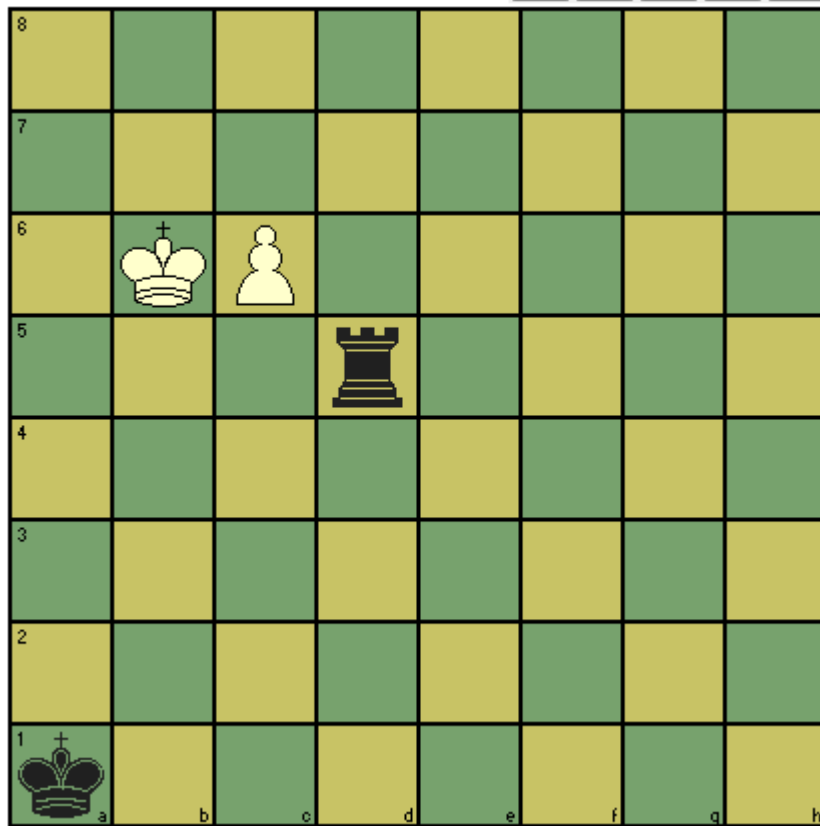


CHESSE T' MINIT puzzle – October 2016

This is a famous composition known as the Saavedra position from the person who first realised that white could win. What are white's moves? (hint, the first one is obvious, but a strategy is then required)



Solution: 1. c7 Rd6+ (Forced) 2. Kb5! This move has the idea of bringing the king all the way over to c2 to avoid skewers or pins losing the white pawn. Rd5 3. Kb4 Rd4+ 4. Kb3 Rd3+ 5. Kc2 Rd4 (with the idea 6. c8=Q Rc4+! 7. Qxc4 stalemate) 6. c8=R Ra4 (to avoid checkmate) 7. Kb3 threatens the rook capture and checkmate at c1.