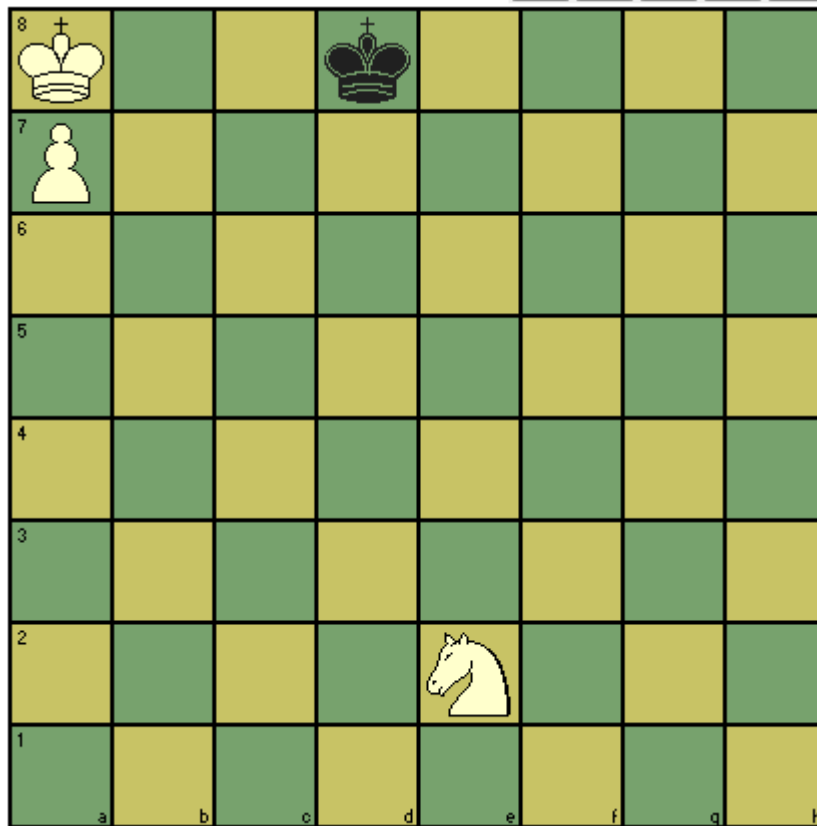


CHESST' MINIT puzzle – November 2015

Black to move – draw or loss, and if a draw, which move and strategy.



Solution. 1. .. Kc8 is necessary – black needs to keep the White king trapped at a8. If black plays 1 ... Kc7 then white will eventually be able to move their knight to attack the square in the c8/d8 pair which is not occupied by the black king, thus forcing it away.