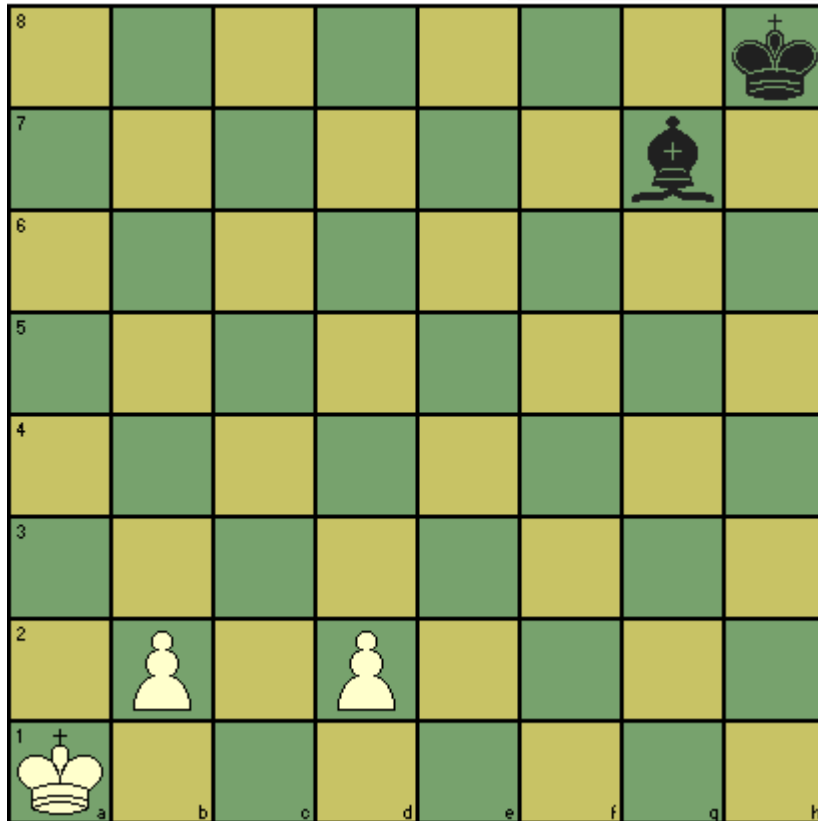


CHESST' MINIT puzzle – December 2013

The Christmas puzzle this year is a chess problem penned by Theodor Steudel in 1997, and appears on the Australian Chess Problemists website, <http://www.ozproblems.com>. This is what is known as a 'series mate', in this case in 13 moves. White is to make a sequence of moves (black does not reply) in a way that, until the last move (which delivers checkmate) neither white nor black are in check.



Solution:

1.d4 2.b4 3.b5 4.b6 5.b7 6.b8=N 7.Nd7 8.Nf6 9.d5 10.d6 11.d7 12.d8=N 13.Nf7#